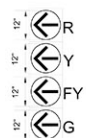


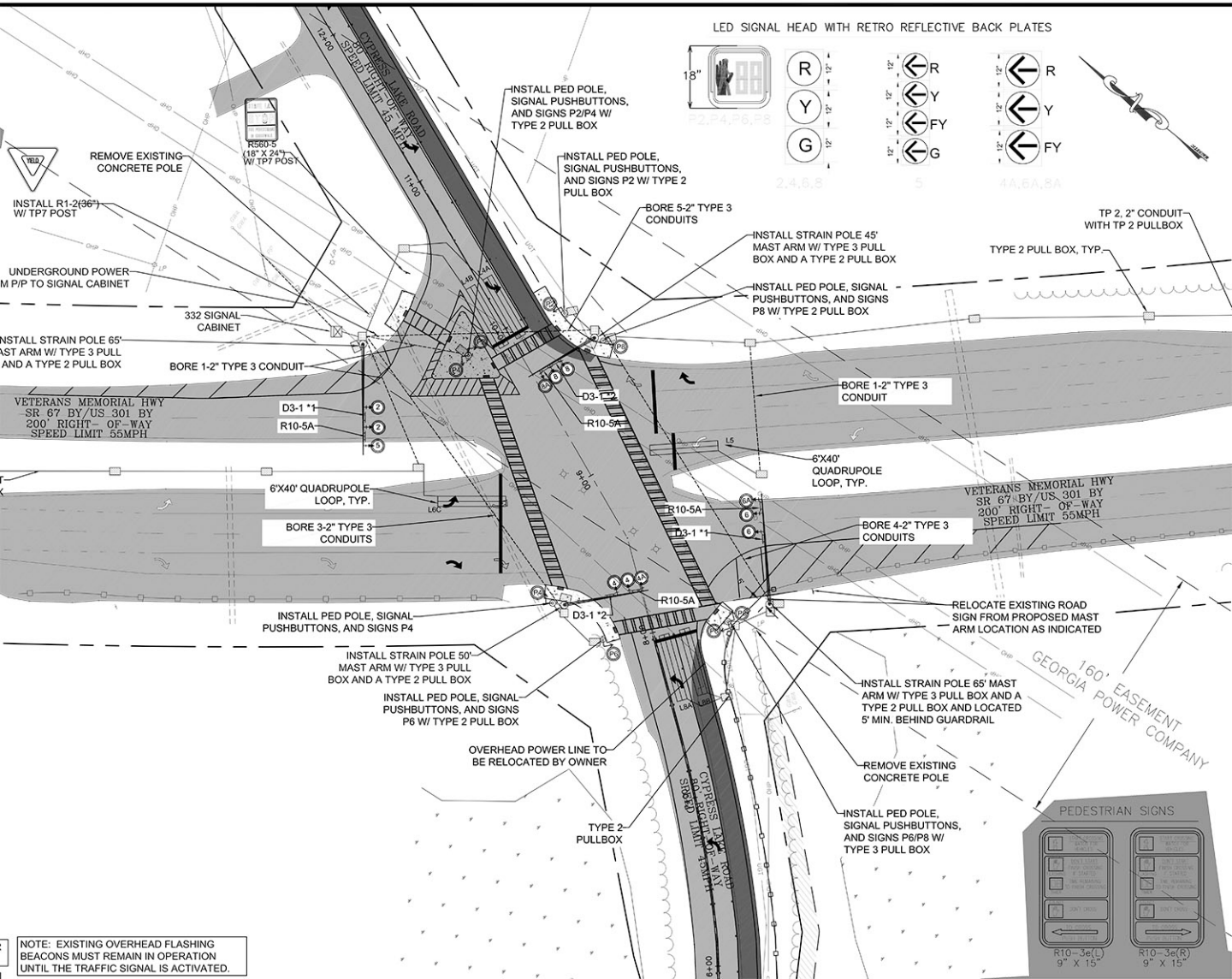
# LED SIGNAL HEAD WITH RETRO REFLECTIVE BACK PLATES



2,4,5,8

5

4A,5A,8A



REMOVE EXISTING  
CONCRETE POLE

INSTALL PED POLE,  
SIGNAL PUSHBUTTONS,  
AND SIGNS P2/P4 W/  
TYPE 2 PULL BOX

INSTALL PED POLE,  
SIGNAL PUSHBUTTONS,  
AND SIGNS P2 W/ TYPE 2  
PULL BOX

INSTALL STRAIN POLE 45"  
MAST ARM W/ TYPE 3 PULL  
BOX AND A TYPE 2 PULL BOX

INSTALL PED POLE, SIGNAL  
PUSHBUTTONS, AND SIGNS  
P8 W/ TYPE 2 PULL BOX

TP 2, 2" CONDUIT  
WITH TP 2 PULLBOX

TYPE 2 PULL BOX, TYP.

332 SIGNAL  
CABINET

BORE 1-2" TYPE 3 CONDUIT

INSTALL STRAIN POLE 65"  
MAST ARM W/ TYPE 3 PULL  
BOX AND A TYPE 2 PULL BOX

BORE 1-2" TYPE 3  
CONDUIT

VETERANS MEMORIAL HWY  
SR 67 BY US 301 BY  
200' RIGHT- OF-WAY  
SPEED LIMIT 55MPH

D3-1 \*1

R10-5A

D3-1 \*2

R10-5A

6'X40' QUADRUPOLE  
LOOP, TYP.

BORE 3-2" TYPE 3  
CONDUITS

6'X40'  
QUADRUPOLE  
LOOP, TYP.

BORE 4-2" TYPE 3  
CONDUITS

VETERANS MEMORIAL HWY  
SR 67 BY US 301 BY  
200' RIGHT- OF-WAY  
SPEED LIMIT 55MPH

INSTALL PED POLE, SIGNAL  
PUSHBUTTONS, AND SIGNS P4

INSTALL STRAIN POLE 50"  
MAST ARM W/ TYPE 3 PULL  
BOX AND A TYPE 2 PULL BOX

INSTALL PED POLE, SIGNAL  
PUSHBUTTONS, AND SIGNS  
P6 W/ TYPE 2 PULL BOX

OVERHEAD POWER LINE TO  
BE RELOCATED BY OWNER

TYPE 2  
PULLBOX

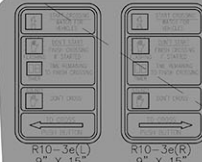
RELOCATE EXISTING ROAD  
SIGN FROM PROPOSED MAST  
ARM LOCATION AS INDICATED

INSTALL STRAIN POLE 65" MAST  
ARM W/ TYPE 3 PULL BOX AND A  
TYPE 2 PULL BOX AND LOCATED  
5' MIN. BEHIND GUARDRAIL

INSTALL PED POLE,  
SIGNAL PUSHBUTTONS,  
AND SIGNS P6/P8 W/  
TYPE 3 PULL BOX

160' EASEMENT  
GEORGIA POWER COMPANY

PEDESTRIAN SIGNS



NOTE: EXISTING OVERHEAD FLASHING  
BEACONS MUST REMAIN IN OPERATION  
UNTIL THE TRAFFIC SIGNAL IS ACTIVATED.